

WiFi product HTTP Client mode manual

File Version: V1.0.0

Overview

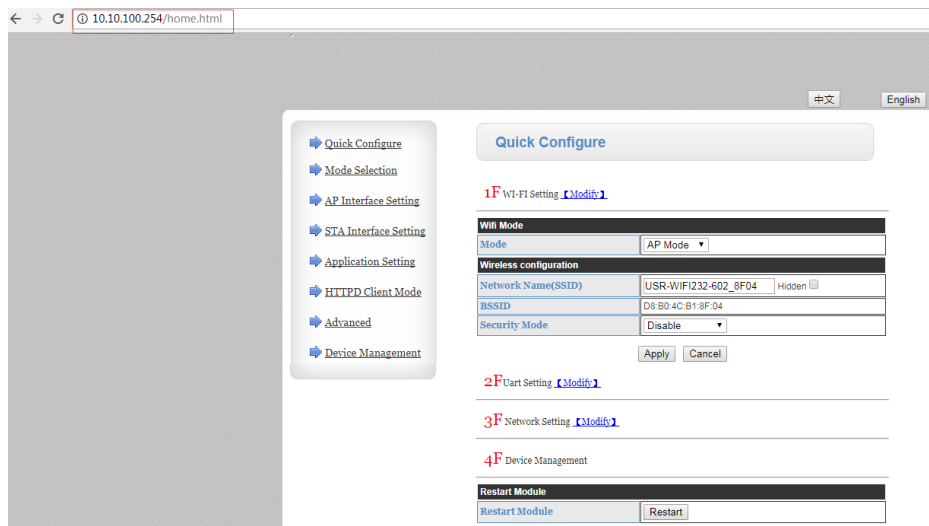
This manual introduces the HTTP Client mode of high-performance WiFi product(Include A2, B2, D2 and USR-WIFI232-602 V2, USR-WIFI232-604 V2, USR-WIFI232-610 V2, USR-WIFI232-630 V2).

HTTP Client mode: After enabling this function, user can send data or get data from HTTP server. When using this function, user just needs to set related configuration by AT command or Web Server and module will package serial data into HTTP protocol data packet then transmit them to HTTP server.

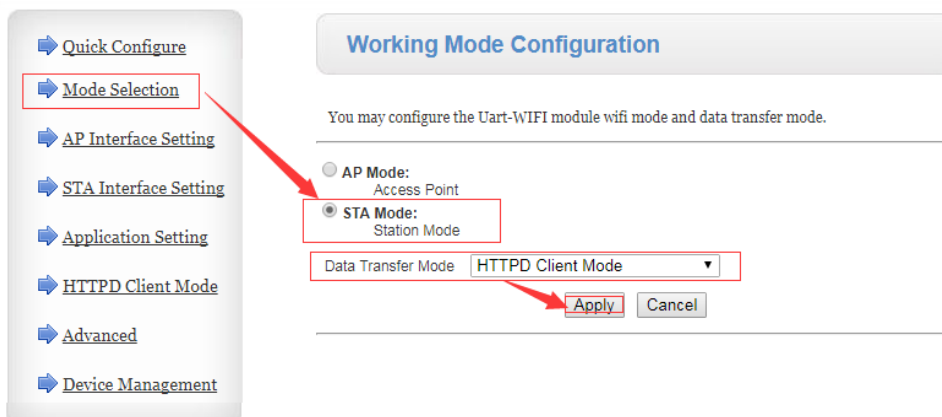
1.Configuration

In this manual, we take USR-WIFI232-602 V2 as example to test.

Step 1: Enter Web Server. 602 V2 is in default settings(AP mode and IP address is 10.10.100.254), so we can connect PC to 602 V2 by WiFi connection then enter Web Server through 10.10.100.254 with username/password both are admin. (If user wants to configure module by AT command, user should connect PC to 602 by serial cable and refer to <http://www.usriot.com/enter-serial-command-mode/> to enter AT command mode and send AT commands)



Step 2: Change module to STA mode and HTTP Client mode.



By AT command: AT+WMODE=STA, AT+ TMODE=Httpdclient

Step 3: Configure STA interface setting.

- ➔ [Quick Configure](#)
- ➔ [Mode Selection](#)
- ➔ [AP Interface Setting](#)
- ➔ [STA Interface Setting](#)
- ➔ [Application Setting](#)
- ➔ [HTTPD Client Mode](#)
- ➔ [Advanced](#)
- ➔ [Device Management](#)

STA Interface Setting

You could configure STA interface parameters here.

STA Interface Parameters	
AP's SSID	YRWLW Search...
MAC Address (Optional)	<input type="text"/>
Security Mode	WPA2PSK ▼
Encryption Type	AES ▼
Pass Phrase	<input type="password"/>

WAN Connection Type: DHCP(Auto config) ▼

DHCP Mode	
Hostname(Optional)	USR-WIFI232-602_8F04

By AT command: AT+WSSSID=AP's SSID, AT+WSKEY=WPA2PSK,AES,AP's password

Step 4: Configure HTTP Client mode parameters. (We take our server test.usr.cn as example)

- ➔ [Quick Configure](#)
- ➔ [Mode Selection](#)
- ➔ [AP Interface Setting](#)
- ➔ [STA Interface Setting](#)
- ➔ [HTTPD Client Mode](#)
- ➔ [Advanced](#)
- ➔ [Device Management](#)

HTTPD-Client Mode

In HTTPD_Client mode, set the relevant parameters of HTTP

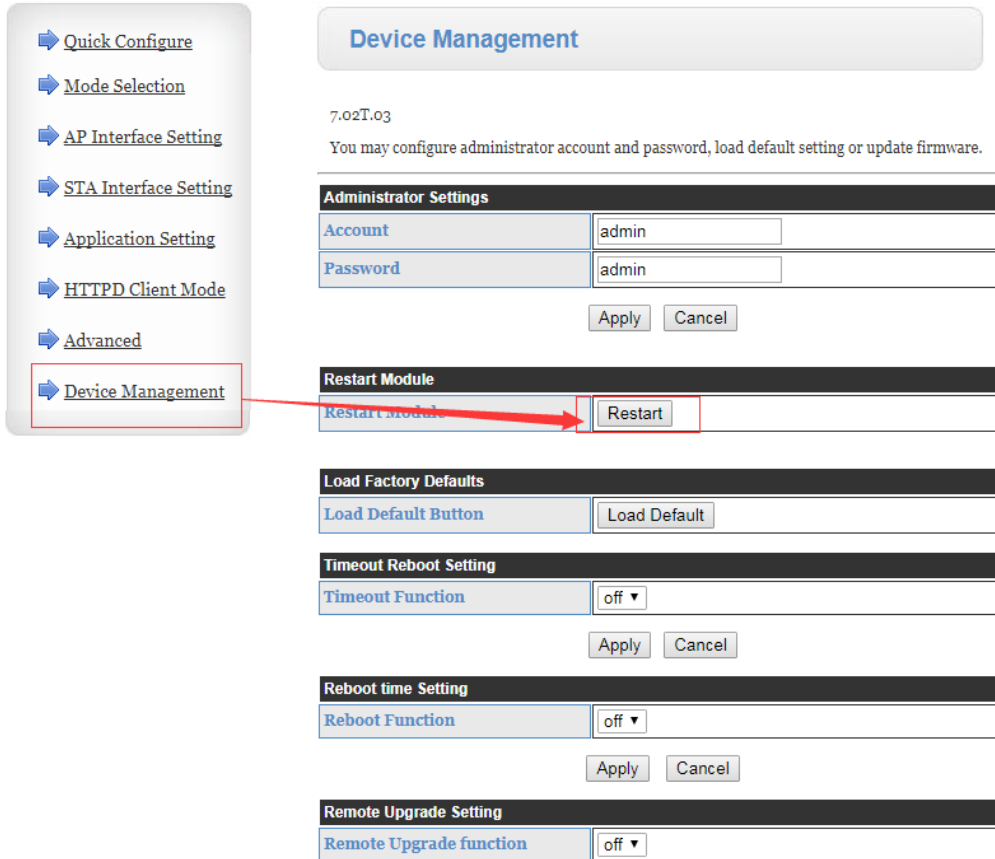
Note: HTTPD Client mode is used to communicate with HTTP Server. It encapsulate the serial data to be HTTP protocol data, then send to HTTP Server.

HTTPD Header Set Mode	new ▼
HTTPD Server address	test.usr.cn
HTTPD Server port	80
HTTPD Request Type	GET ▼
HTTPD Header path	/2.php?
Custom HTTP Header	Content-type:text/html;charset=utf-8

when HTTPD header set to be "old", use old setting method, that is to fill each header. When set to be "new", use new setting method, the header can be user-defined(There can't have "enter" at the end).

By AT command: AT+ HTPMODE=new, AT+ HTPSV=test.usr.cn,80, AT+ HTPTP=GET, AT+ HTPURL=/2.php?, AT+ HTPHEAD=Content-type:text/html;charset=utf-8

Step 5: Reset the module.



Device Management

7.02T.03
You may configure administrator account and password, load default setting or update firmware.

Administrator Settings

Account	<input type="text" value="admin"/>
Password	<input type="text" value="admin"/>

Restart Module

Restart Module	<input type="button" value="Restart"/>
----------------	--

Load Factory Defaults

Load Default Button	<input type="button" value="Load Default"/>
---------------------	---

Timeout Reboot Setting

Timeout Function	<input type="text" value="off"/>
------------------	----------------------------------

Reboot time Setting

Reboot Function	<input type="text" value="off"/>
-----------------	----------------------------------

Remote Upgrade Setting

Remote Upgrade function	<input type="text" value="off"/>
-------------------------	----------------------------------

By AT command: AT+Z

2.Contact Us

Company: Jinan USR IOT Technology Limited

Address: Floor 11, Building 1, No. 1166 Xinluo Street, Gaoxin District, Jinan, Shandong, 250101, China

Web: www.usriot.com

Support: h.usriot.com

Email: sales@usriot.com

Tel: 86-531-88826739/86-531-55507297

3.Disclaimer

This document provides the information of high-performance WiFi products, it hasn't been granted any intellectual property license by forbidding speak or other ways either explicitly or implicitly. Except the duty declared in sales terms and conditions, we don't take any other responsibilities. We don't warrant the products sales and use explicitly or implicitly, including particular purpose merchant-ability and marketability, the tort liability of any other patent right, copyright, intellectual property right. We may modify specification and description at any time without prior notice.

4.Update History

2018-01-05 V1.0.0 established.